

Order the Emergency Procedure

What do you do in an anaphylactic emergency, and why?

1: _____

Why? _____

2: _____

Why? _____

3: _____

Why? _____

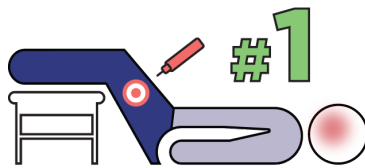
4: _____

Why? _____

5: _____

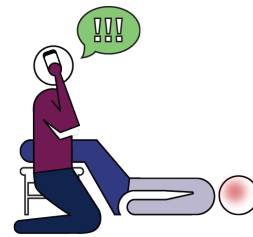
Why? _____

A



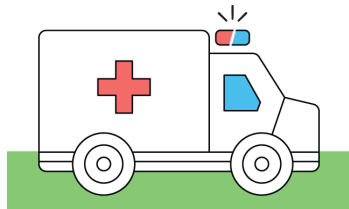
Give the first dose of epinephrine

D



Call the emergency number

B



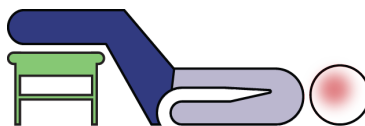
Go to the hospital

E



Give the second dose of epinephrine/adrenaline if needed

C



Lay the person down